

**Ximifax**

# What is Ximifax ?



## Broad Spectrum

Ximifax (Rifaximin) is a structural analog of rifampin. It is a broad-spectrum, non-systemic antibiotic specifically designed to target gastrointestinal pathogens without affecting the entire body.

## Non-Systemic Action

Unlike conventional antibiotics, Ximifax has negligible systemic absorption (<0.4%). It stays in the gut where the infection is, maximizing local efficacy while minimizing systemic side effects.

# Mechanism of Action



- 🎯 **Targeted Binding:** Binds to the beta-subunit of bacterial DNA-dependent RNA polymerase.
- 🚫 **Blocks Transcription:** Inhibits bacterial RNA synthesis, effectively stopping bacterial growth.
- 🛡️ **Gut Concentration:** Maintains high fecal concentrations to combat pathogens directly at the source.



# Key Indications



## IBS-D

Irritable Bowel Syndrome with  
Diarrhea in adults.



## Traveler's Diarrhea

Caused by noninvasive strains of *E. coli*.



## Hepatic Encephalopathy

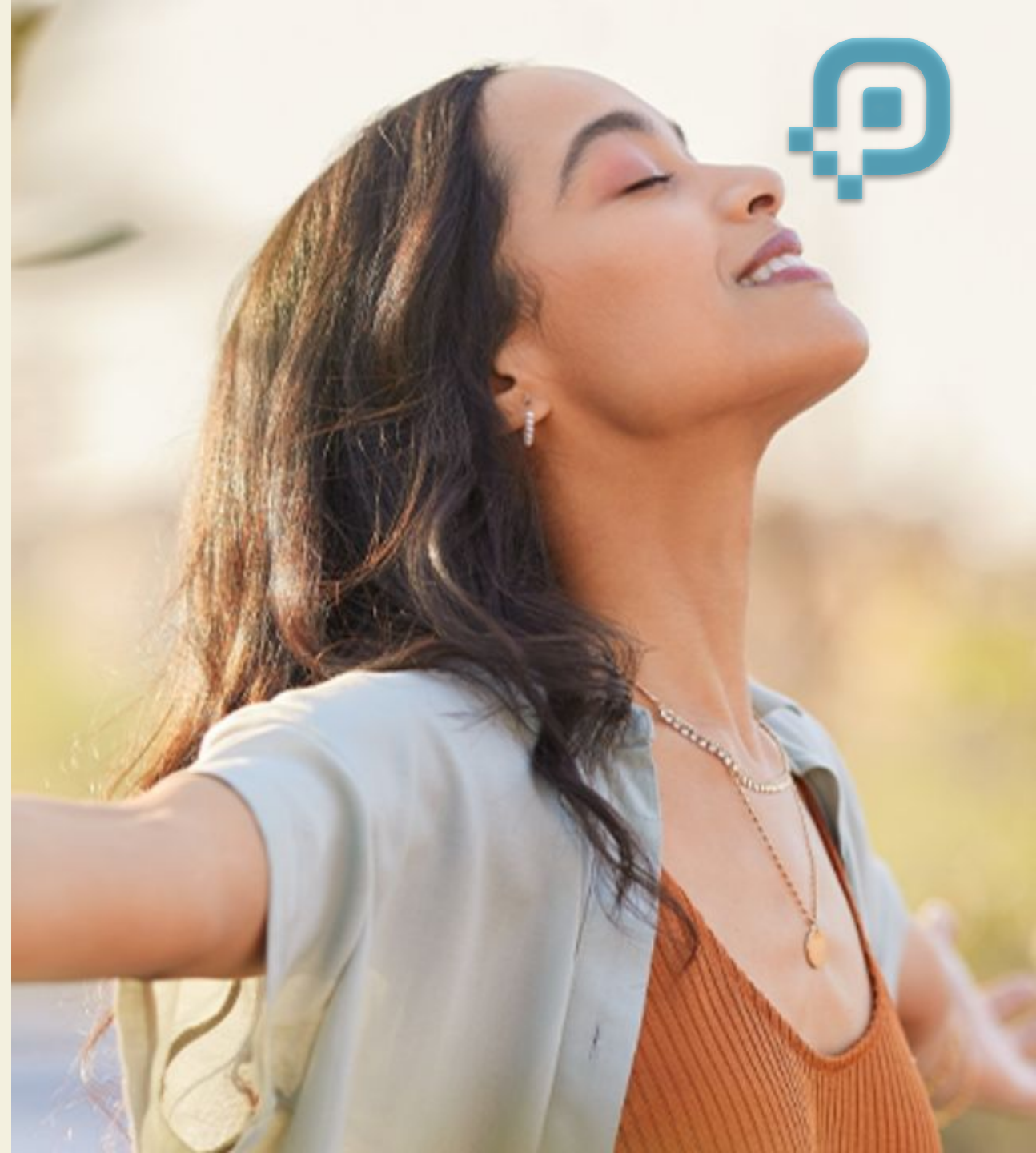
Reduction in risk of overt HE  
recurrence.

# Relief for IBS-D

**Restore Harmony:** Ximifax targets the gut microbiota imbalance often responsible for IBS-D symptoms.

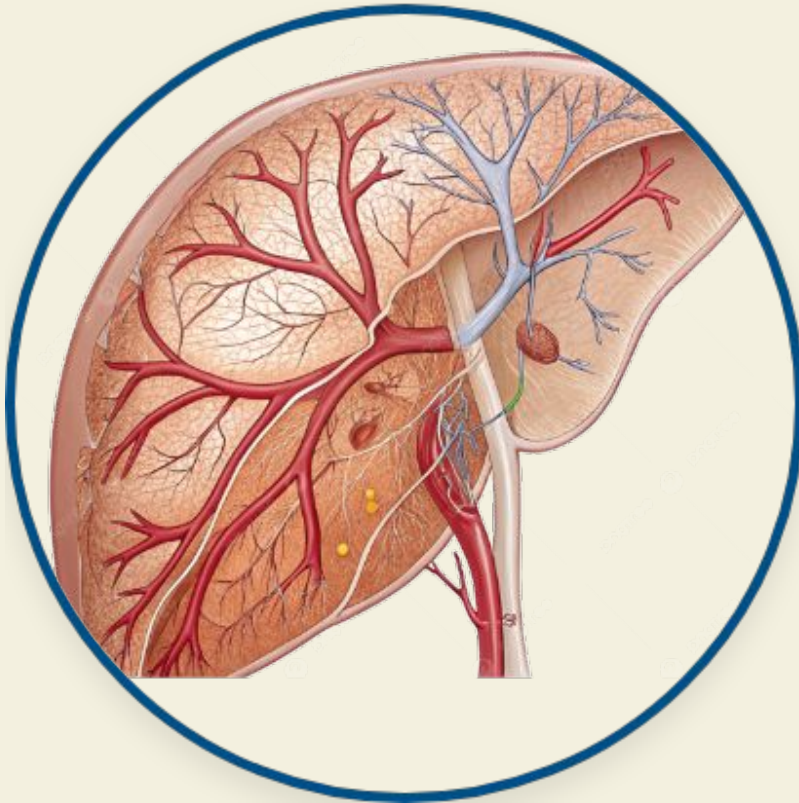
**Proven Results:** Significantly improves abdominal pain and stool consistency. It offers a sustained response even after treatment cessation.

- 14-day treatment course
- Repeat treatment approved
- Non-habit forming





# Hepatic Encephalopathy (HE)



## Protecting Brain Function

HE is a serious complication of liver disease. Ximifax works by reducing ammonia-producing bacteria in the gut.




**Key Benefit:** Significantly reduces the risk of overt HE recurrence and HE-related hospitalizations. It is the standard of care for long-term management.

# Traveler's Diarrhea



## Don't Let Bacteria Ruin the Trip

Traveler's Diarrhea is often caused by enterotoxigenic *E. coli*. Ximifax provides rapid relief.

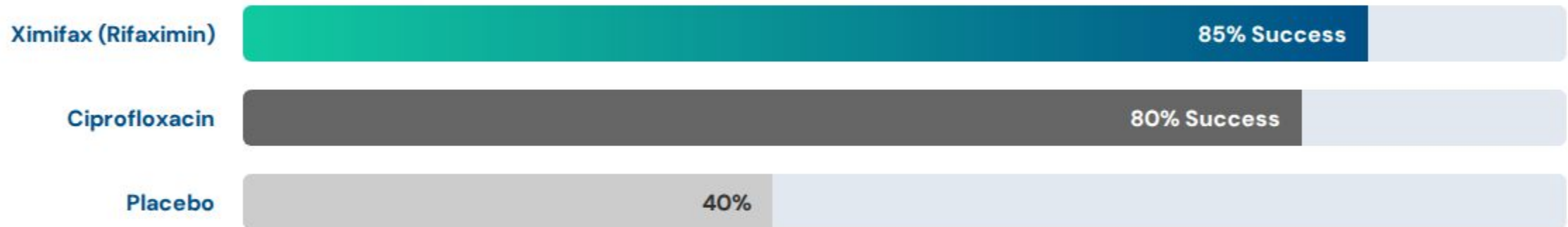
-  **Fast Action:** Short 3-day course.
-  **Efficacy:** Highly effective against non-invasive *E. coli* strains.
-  **Tolerance:** Excellent tolerability profile comparable to placebo.



# Clinical Efficacy



Ximifax demonstrates superior clinical outcomes in treating Traveler's Diarrhea compared to placebo.



\*Data for illustrative purposes representing general clinical trends for Rifaximin in non-invasive E. coli infections.





|  |  |   |
|--|--|---|
| <p>❖ <b>Irritable Bowel Syndrome with Diarrhea (IBS-D):</b></p> <p>Multiple randomized, double-blind, placebo-controlled trials (such as the TARGET studies) have shown that a 2-week course of rifaximin (550 mg three times daily) significantly improves global IBS symptoms, including abdominal pain, bloating, and stool consistency, with effects lasting for several weeks after treatment. Retreatment for symptom recurrence has also been studied and found to be safe and effective.</p> | <p>❖ <b>Reduction in Risk of Overt Hepatic Encephalopathy (HE) Recurrence:</b></p> <p>A large 6-month randomized, double-blind, placebo-controlled trial demonstrated that rifaximin (550 mg twice daily), usually in combination with lactulose, significantly reduced the risk of a breakthrough HE episode and related hospitalization by 58% and 50%, respectively. Long-term safety and efficacy for maintenance of remission have also been established in open-label extension studies.</p> | <p>❖ <b>Travelers' Diarrhea (caused by noninvasive <i>E. coli</i>)</b></p> <p>Randomized controlled trials have shown that rifaximin (typically 200 mg three times daily for 3 days) significantly shortens the duration of illness compared to placebo and has comparable efficacy to ciprofloxacin for non-invasive strains</p> |
|--|--|---|

# Safety & Tolerability



## Minimal Systemic Absorption

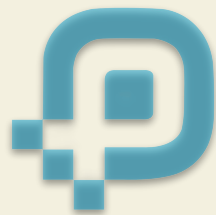
Because Ximifax stays in the gut, it has a side effect profile similar to placebo. It avoids the systemic adverse effects often seen with other antibiotics.

## Microbiome Friendly

Ximifax has a minimal effect on the normal beneficial gut flora, preserving the microbiome balance while targeting pathogens.



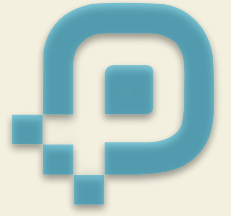
# Dosage & Administration



| Indication             | Dosage Strength | Regimen                 | Duration                |
|------------------------|-----------------|-------------------------|-------------------------|
| Traveler's Diarrhea    | 200 mg          | 1 tablet, 3 times daily | 3 Days                  |
| IBS-D                  | 550 mg          | 1 tablet, 3 times daily | 14 Days                 |
| Hepatic Encephalopathy | 550 mg          | 1 tablet, 2 times daily | Long-term / Maintenance |



# Why Choose Ximifax ?



**Proven Efficacy:** The trusted choice for GI infections and HE management.



**Excellent Safety:** Non-systemic action means fewer side effects for your patients.



**Patient Value:** Ximifax offers high-quality therapy with a focus on patient compliance and affordability.



**Trusted Brand:** Committed to supporting doctors and patients in the journey to better gut health.





**Thank You**